

Monarch & Mimics Identification Guide

Queen, *Danaus gilippus*

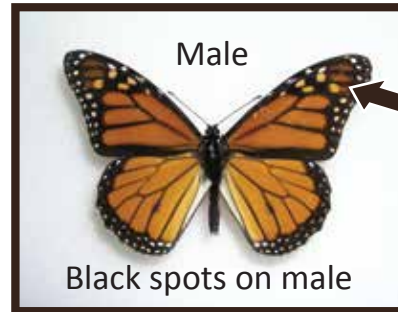


Upper wing lacks the black veins seen on Monarchs. Found only in the Southeastern corner of Wyoming.

Monarch, *Danaus plexippus*



Female



Male

Black spots on male



Our target species! Most likely to be confused with the Viceroy.

Viceroy, *Limenitis archippus*

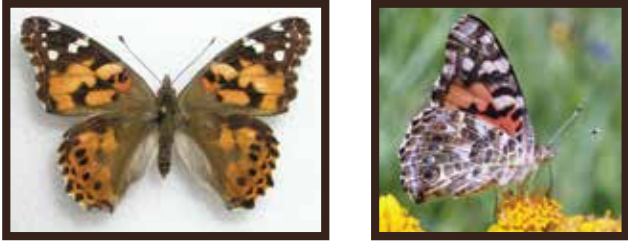


Similar to Monarchs in size and coloration. Compare the spotting patterns (see top arrow) on forewing. Viceroys also have a straight band (see bottom arrow) on their hindwings that Monarchs don't have.

www.monarchsandmilkweeds.org



Painted Lady, *Vanessa cardui*

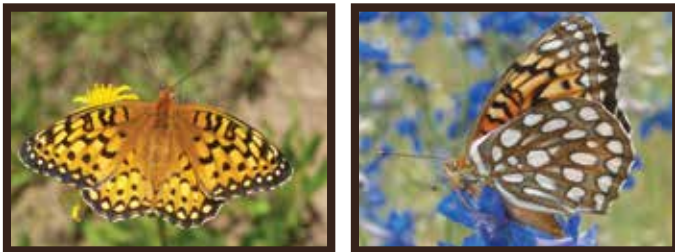


Painted Ladies are smaller than Monarchs, and have similar colors on their upper wing, but note the gray color pattern on the hindwings.

Mormon Fritillary, *Speyeria mormonia*



Edward's Fritillary, *Speyeria edwardsii*



These are not as similar to Monarchs but might be mistaken for one at a distance. Fritillaries are generally more yellowish than Monarchs.

Quiz time! Can you spot the Monarch?



Answer key: 1 Painted Lady, 2 Monarch, 3 Monarch, 4 Milbert's Tortoiseshell, 5 Edward's Fritillary, 6 Mormon Fritillary, 7 Monarch, 8 Viceroy, 9 Monarch

Monarchs & Milkweeds

